

Although summers are usually quiet at Universiteit Leiden, a lot is going on in and around NeCEN. Microscopes are being installed, a building is being furnished and activities are being planned. This newsletter informs you about two recent developments. Furthermore, the important dates and contact details are listed for your convenience.

'First light' through Krios 1

The microscope that arrived first produced its first images in July (see figure). The images are part of the system acceptance tests, performed by employees of FEI. Once the microscope passes these tests, application tests will start. A team led by Bram Koster and Gert Oostergetel will perform these tests on biological samples. This commissioning team includes scientists from different partners.

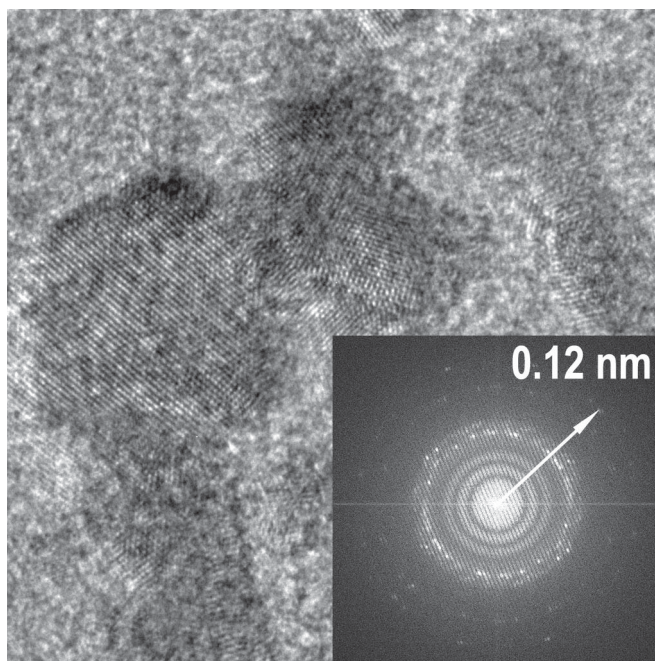
Krios 2 is not operational yet, but installation is almost completed. Within a few weeks the electron gun will be installed. After this, system acceptance tests and application tests can also be run on this microscope.

Furnishing the building

Next to the microscope rooms and a control room, the new building for NeCEN contains office spaces and laboratories to host the guest scientists that will be working in Leiden. An overview of all things necessary is being made and will soon be ordered. This includes freezers, centrifuges, desks etc.

Contact details

Website: www.necen.nl
 E-mail: necen@science.leidenuniv.nl
 Twitter: @ne_cen



HR TEM micrograph of gold lattice on cross-grating EM grid, acquired on the Gatan Quantum 963 CCD at about 520,000 x magnification. Inset shows FFT and the farthest dots are due to gold lattice information at 0.12 nm. Image provided by Sacha de Carlo, FEI

Important dates

- **2011-09-22:** 'Grasping the potential of NeCEN', meeting for partners and potential users
- **2011-10-27:** Festive opening of NeCEN
- **2011-10-30:** NeCEN open to public, Science day

Netherlands Centre for Electron Nanoscopy



Investing in your future: NeCEN is part-financed by the European Regional Development Fund of the EU